



TERÄSPAALUPÄIVÄ 2019

INFRARAKENTAMISEN YKKÖSTAPAHTUMA

SSAB

RRs piles by the river mouth of Nordic's longest river

Sondre Smeland

Technical Manager – SSAB, Norway

The SSAB logo is located in the bottom right corner of the image. It consists of the letters "SSAB" in a bold, white, sans-serif font. The background of the entire slide is a photograph of a construction site. In the foreground, there is a large pile of grey and reddish-brown gravel. A vertical metal pile is partially visible on the right side, with the text "D 800/6.3 PILE CE" printed vertically on it. In the background, there are several long, cylindrical metal pipes stacked horizontally. The scene is set outdoors with trees and a house visible in the distance under a clear blue sky.

RRs piles by the river mouth of Nordic's longest river



- ❖ Project owners
- ❖ 19 000 m² of stock building
- ❖ For storage of ligning before shipping
- ❖ To move transportation from road to sea
- ❖ A CO₂ reduction measure



- ❖ Norway's biggest RR project
- ❖ Kynningsrud biggest RR project
- ❖ Optimized with S550J2H steel quality



- ❖ 1 520 ton of RRs piles
- ❖ 35,6 km of piles
- ❖ 1 450 pile installation
- ❖ 61 truck arrivels

RRs piles by the river mouth of Nordic's longest river

► Where are we?



RRs piles by the river mouth of Nordic's longest river

► In a deltaic setting

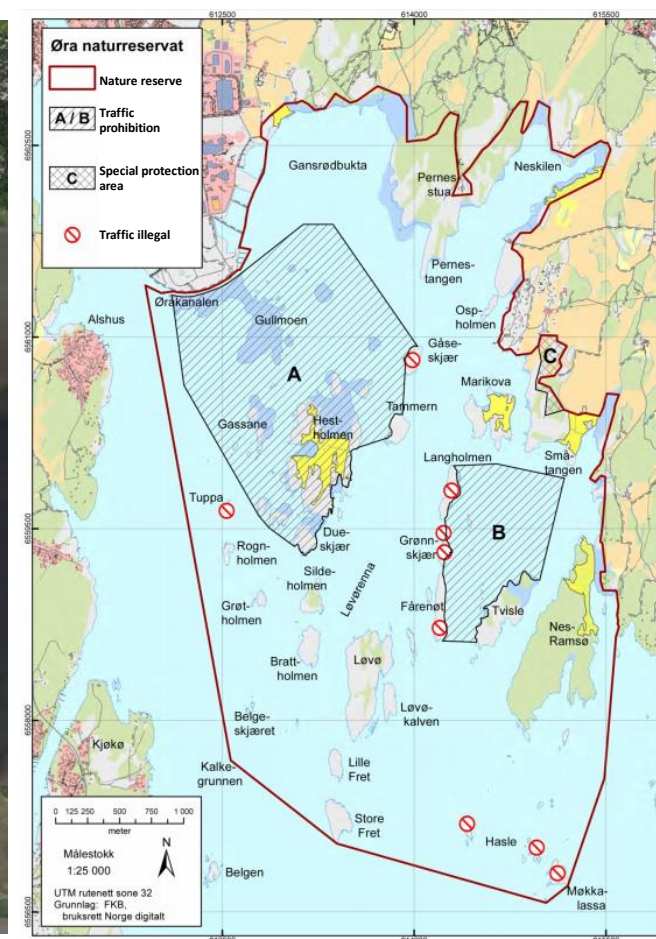
- Outlet of the Glomma river
 - 623 km long
 - 42 000 km² drainage area
 - 705 m³/s discharge



RRs piles by the river mouth of Nordic's longest river

► In a deltaic setting

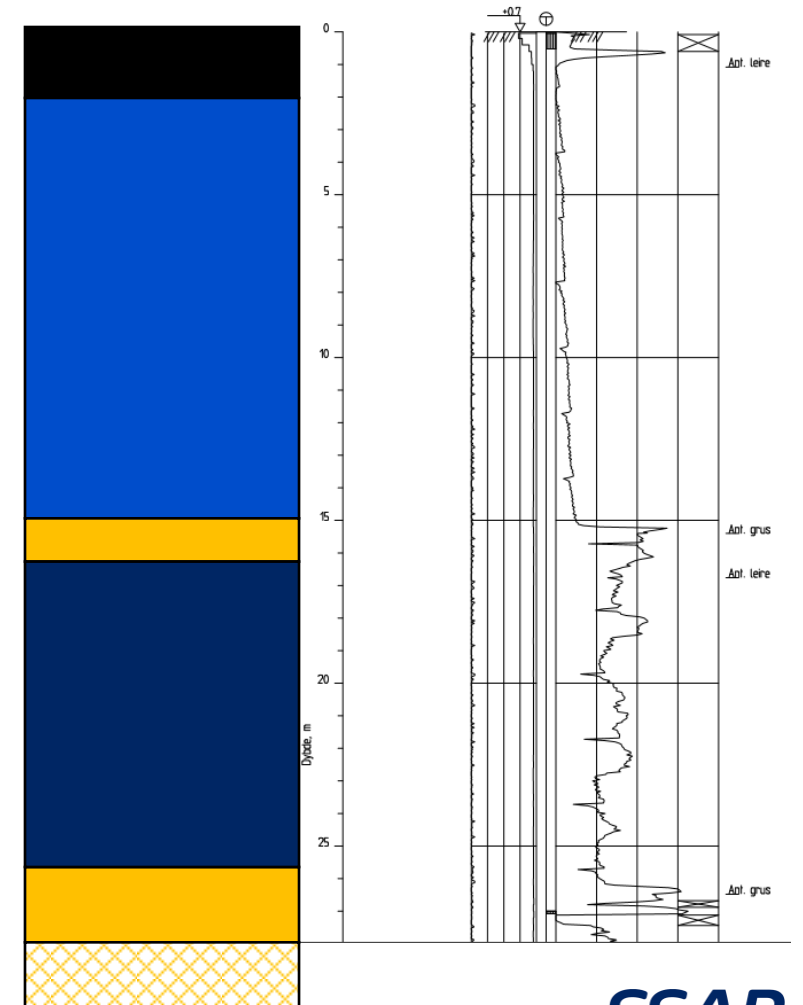
- Outlet of the Glomma river
 - 623 km long
 - 42 000 km² drainage area
 - 705 m³/s discharge
- Attractiv area for wildlife
- Attractive area for industry



RRs piles by the river mouth of Nordic's longest river

► Geotechnical conditions

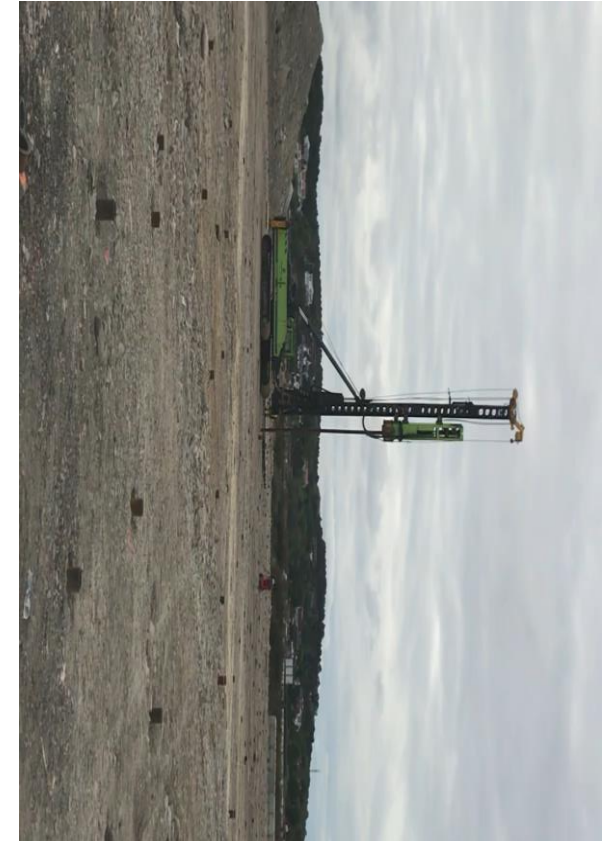
- Rock filling
- Clay deposits
- Fluvial sand and gravel
- Granitic bedrock



RRs piles by the river mouth of Nordic's longest river

► Why where RRs170/10 choosen?

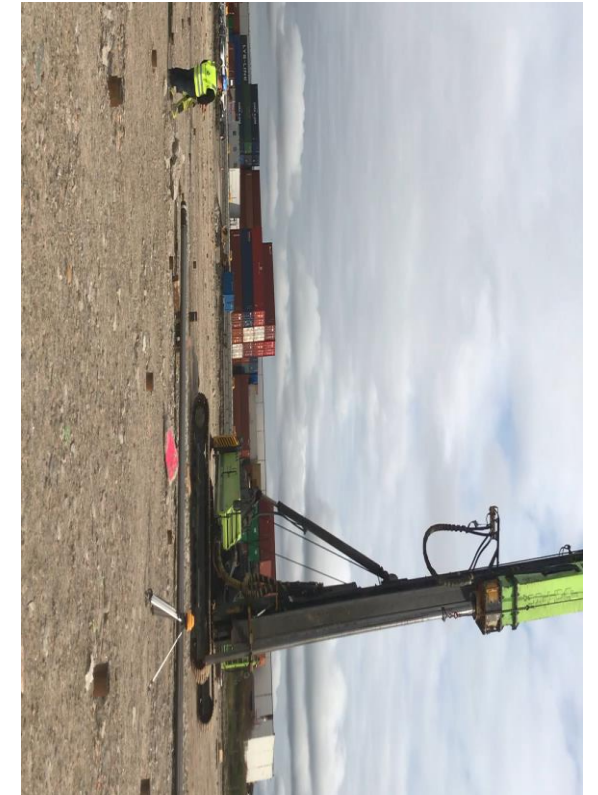
1. Reduse negative skin friction
2. Avoid to use bitumen cover on concrete piles
3. Minimize pile waiste
4. Axellerate the installation speed
5. Minimize displacement of the sorroundings



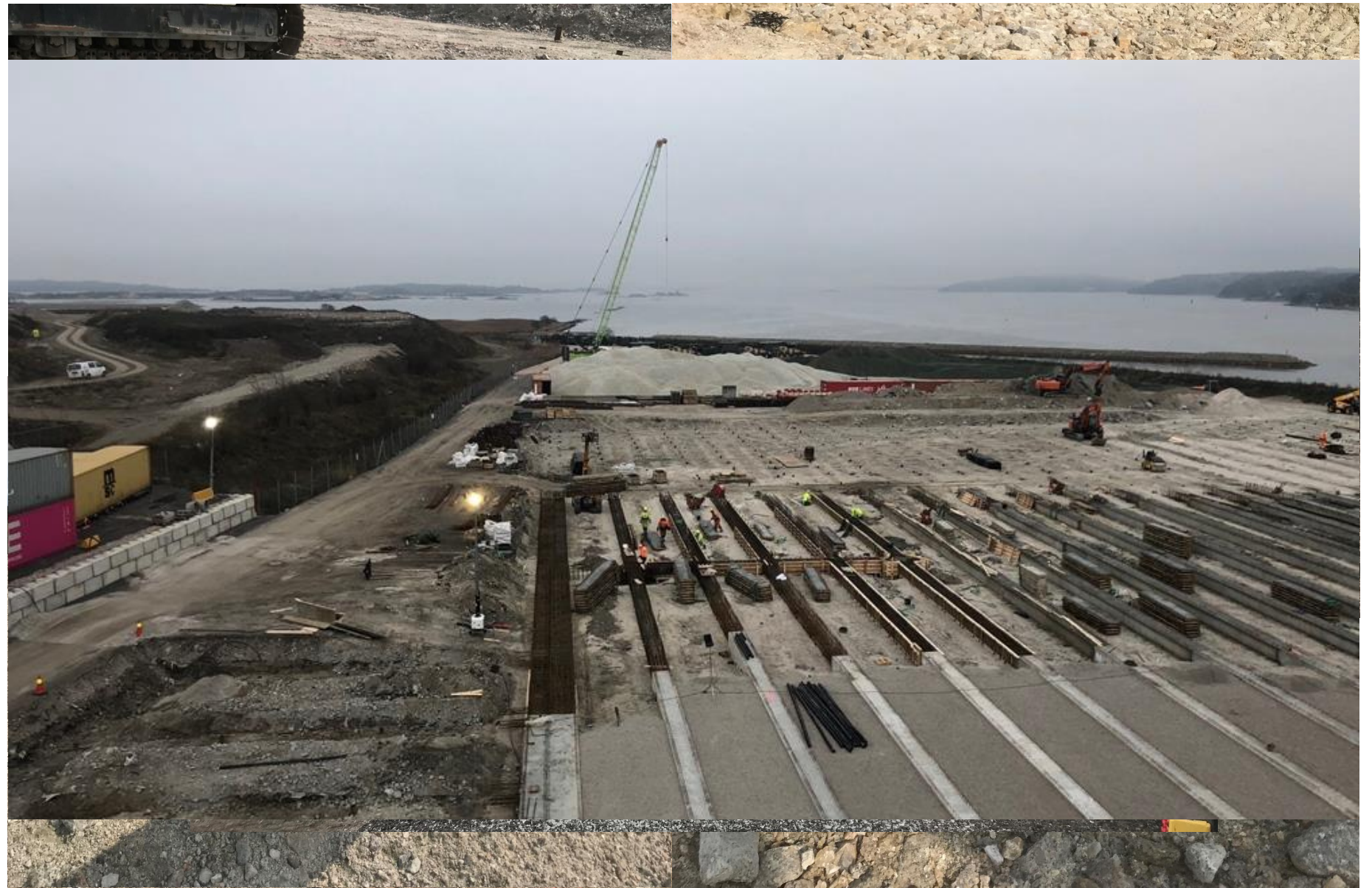
RRs piles by the river mouth of Nordic's longest river

► Feedback from the contractor

1. Strong delivery - on time!
2. Cost efficient product and installation technique
3. To capture a growing marked potential for RR piles in Norway
4. Overall very satisfied!



Questions?



RRs piles by the river mouth of the Nordic's longest river

Sondre Smeland

Technical Manager – SSAB, Norway

The SSAB logo is located in the bottom right corner of the image. It consists of the letters "SSAB" in a bold, white, sans-serif font. The logo is positioned over a background of grey gravel and a vertical metal pile. The pile has some text on it, including "D 800/6.3 PILE CE" and "SSAB".

SSAB



www.ssab.fi/infra

SSAB