

Teräspaalupäivä

SSAB

Landfilling into the sea fenced by watertight RD pile wall solution

Sondre Smeland

Technical Manager, SSAB

“The project”

Gangstøvika, Ålesund



SSAB

“The project”

Gangstøvika, Ålesund

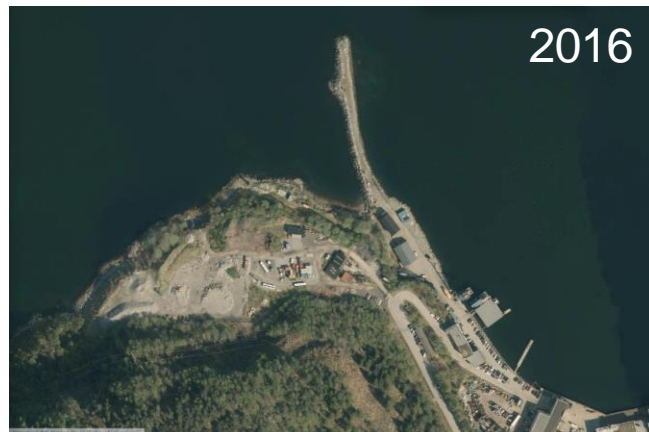


SSAB

“The scope”



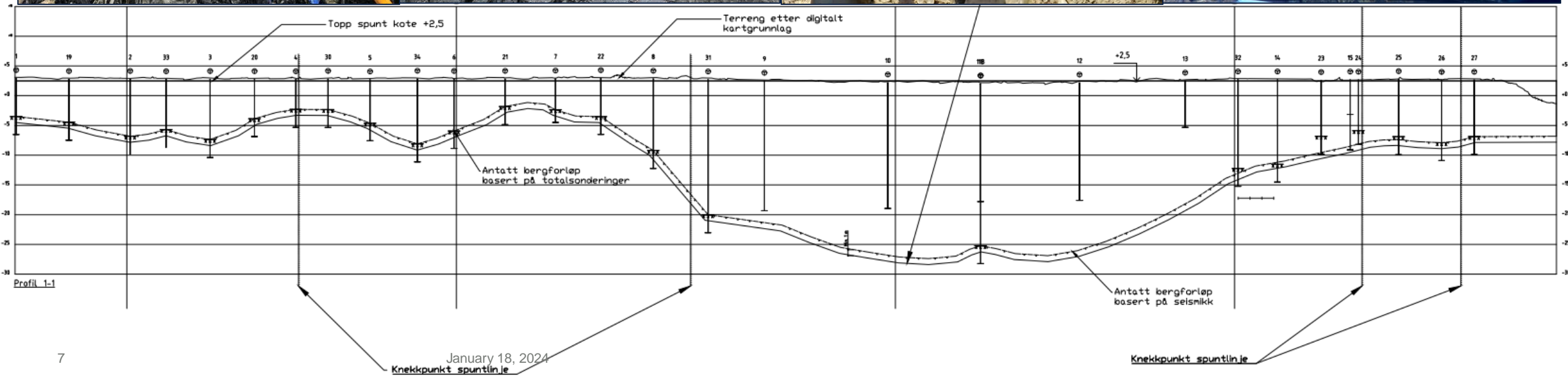
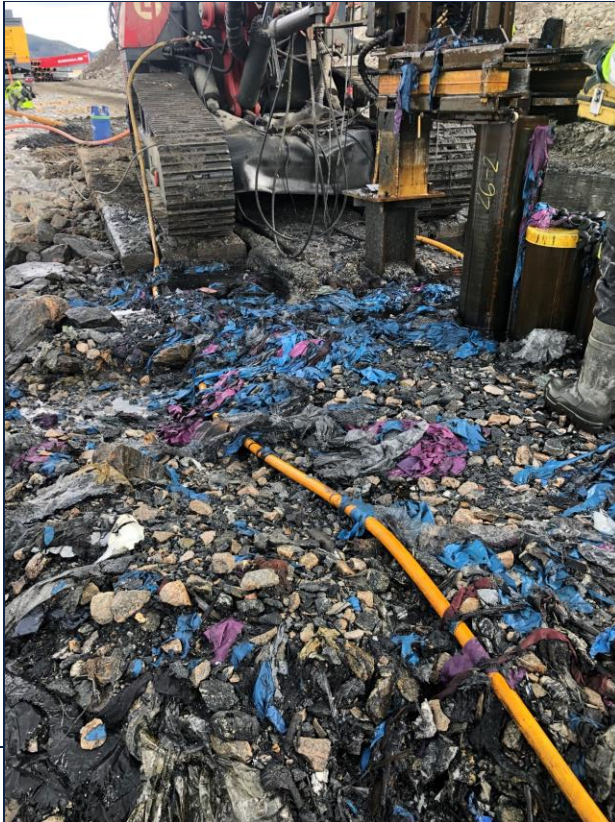
- Municipal waste fill from the 1970's
- No control on amounts, type of waste or placement
- **The State Administrator:** «The fill must be closed and sealed off»



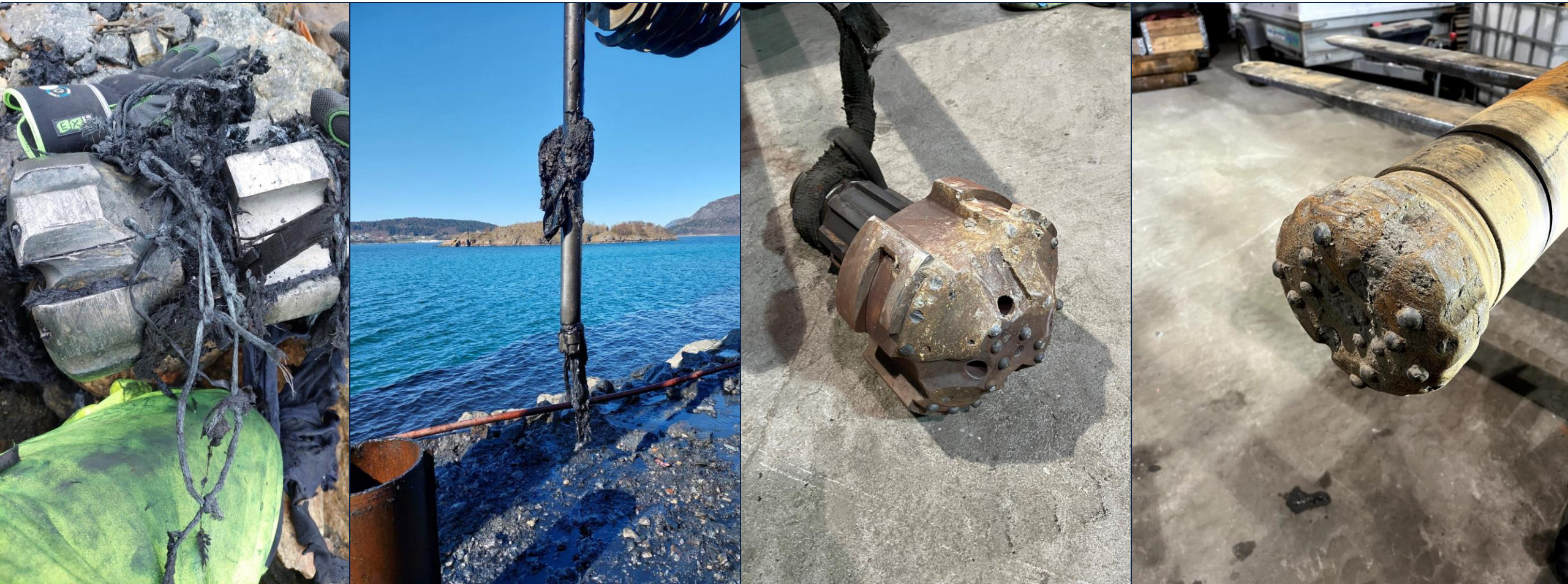
“The scope”



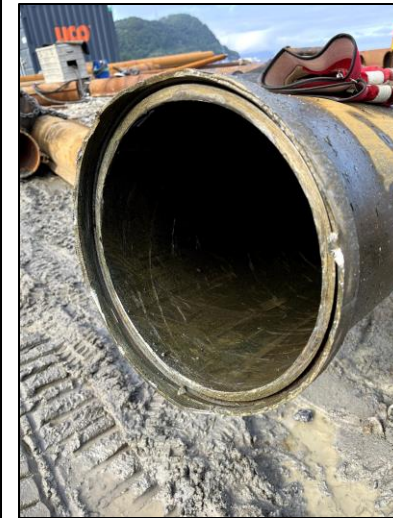
- Watertight drilled support structure facing the sea
- 350m long and up to 27m deep
- 6 wells for cleaning of seepage water
- Drainage of gas
- Closed off with membrane across the fill
- Concrete filled piles with cathodic protection
- 107 000 m³ of masses across 7 500 m²

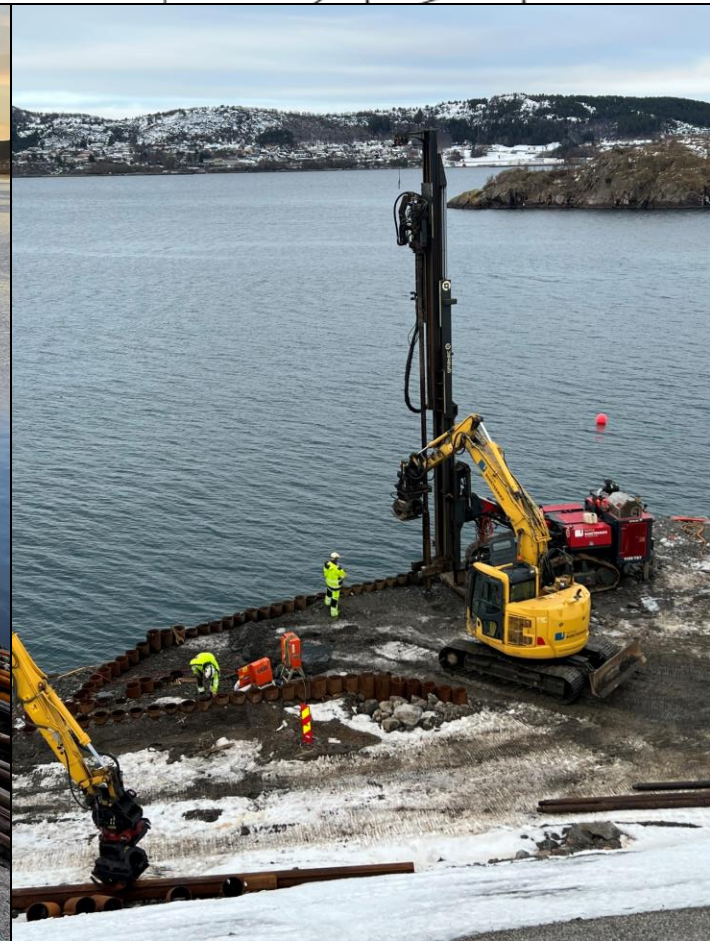
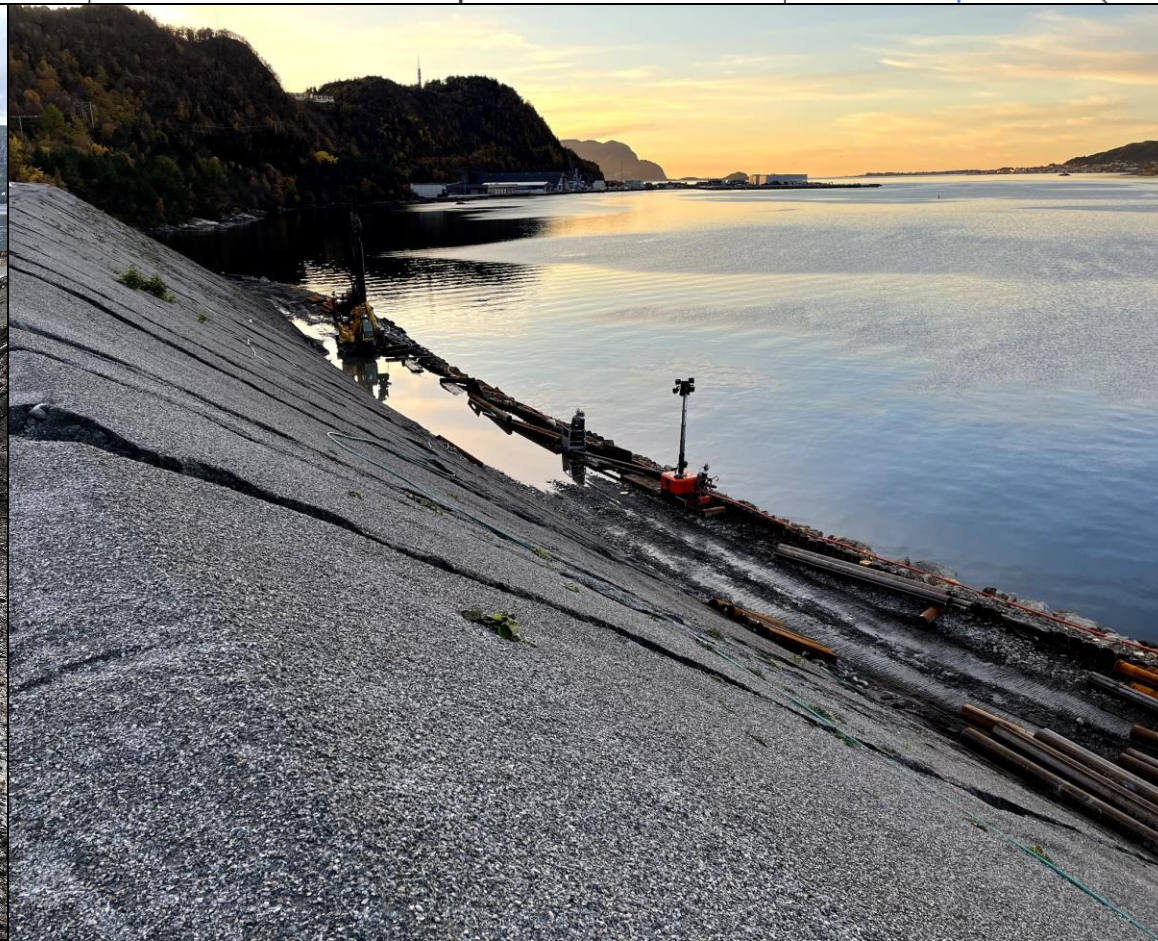
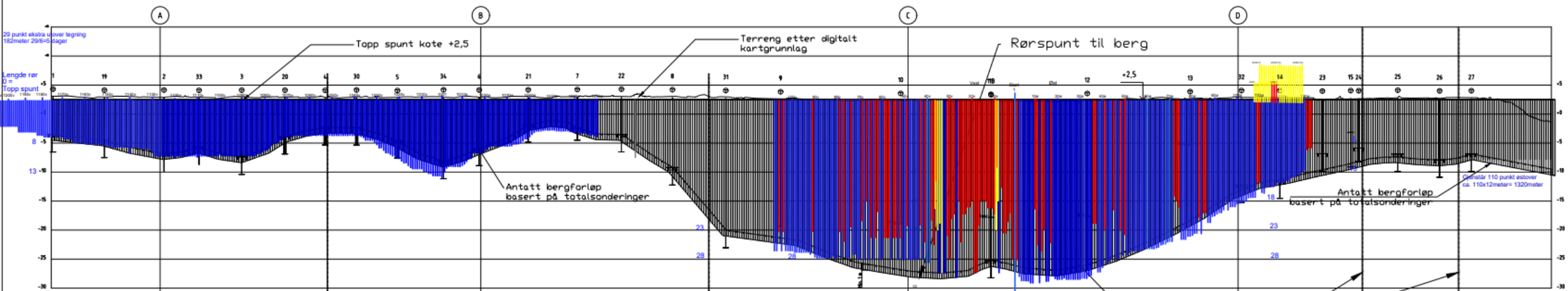


Mitigation measures



Mitigation measures





The crew

Norsk Boreteknikk

From 2004

12+ employees

6 drilling rigs

In a growth position!



SSAB

Thank you!